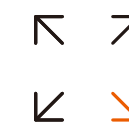


SPEAKER SYSTEM

CSJ SERIES





Available in a variety of sizes



Any combination
in different music spaces



BMB original PRO sound

use scene

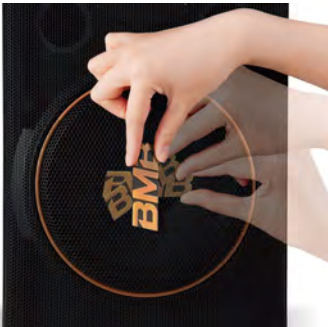
HOME (Living room, Entertainment room),
Meeting room, Bar, Restaurant, Coffee shop, KTV box



Multiple installation choices

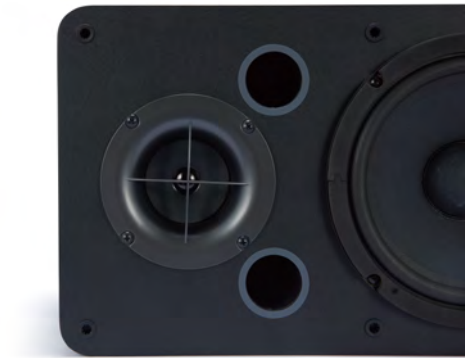
CSJ-05/05A/06/08

Supports vertical and horizontal orientation, ceiling mounting, and stand mounting, and rotatable BMB Logo.
Can adapt to both stereo and multi-channel setups with versatile installation options.
Uses a common "easy-to-sing" sound for all applications.



Sound spreads equally in four directions

CSJ Series use 4-directional New Tweeter Horn.
Spread out Twitter sound more wide range. It can be used as a center speaker without distinguishing between left and right channels.



Paper Cone made in Japan

By using a woofer cone paper made in Japan.
Improves the low-frequency range from conventional karaoke speakers.
Achieving a "enveloping sound" can sing comfortably.



With various sizes to adapt to
(6 models, Woofer size 4.5 to 12 inch)
any music and Karaoke space.

Utilizing a versatile (multi-channel) structural design.
Create a private Music and Karaoke space with CSJ series.



	CSJ-06 [6"]	CSJ-08 [8"]	CSJ-10 [10"]	CSJ-12 [12"]
System Type	Two-way two unit speaker system	Two-way two unit speaker system	Two-way 3 speakers Bass reflex Type	Two-way 5 speakers Bass reflex Type
Frequency Range(-10dB) ¹	51Hz-20kHz	46Hz-20kHz	50Hz-13kHz	48Hz-15kHz
Sound Pressure Level ²	87dB	88dB	88dB	90dB
Impedance	8Ω	8Ω	8Ω	8Ω
Power Capacity	Continuous 80W, Program 160W, Peak 320W	Continuous 120W, Program 240W, Peak 480W	Continuous 225W, Program 450W, Peak 900W	Continuous 400W, Program 800W, Peak 1600W
Dimensions (WxHxD)	215mm × 351mm × 235mm	251mm × 451mm × 258mm	558mm × 296mm × 285mm	600mm × 361mm × 335mm
Net Weight	4.7kg / Each	8.08kg / Each	13.65kg / Each	20.21kg / Each
LF Unit	160mm (6.3") Cone, 32.5mm (1.3") Voice Coil x 1	200mm (7.9") Cone, 35.5mm (1.4") Voice Coil x 1	250mm (10") Cone, 49.5mm (1.95") Voice Coil x 1	305mm (12") Cone, 65.5mm (2.58") Voice Coil x 1
MF Unit	/	/	/	70mm (2.8") Cone, 13.5mm (0.5") Voice Coil x 2
HF Unit	70mm (2.8") Cone, 13.5mm (0.5") Voice Coil x 1	70mm (2.8") Cone, 13.5mm (0.5") Voice Coil x 1	70mm (2.8") Cone, 13.5mm (0.5") Voice Coil x 2	70mm (2.8") Cone, 13.5mm (0.5") Voice Coil x 2
Annotations	¹ Full space (4π) conditions ² 1w1m on-axis, swept-sine in anechoic environment			Notes BMB may change the materials, manufacturing methods, or design of components, in part, for the purpose of product improvement. These actions are routinely introduced into existing products without notice. Current BMB products may differ in some respects from published descriptions but are equal to or better than the original design specifications unless otherwise noted.

BMB HOME KARAOKE SYSTEM



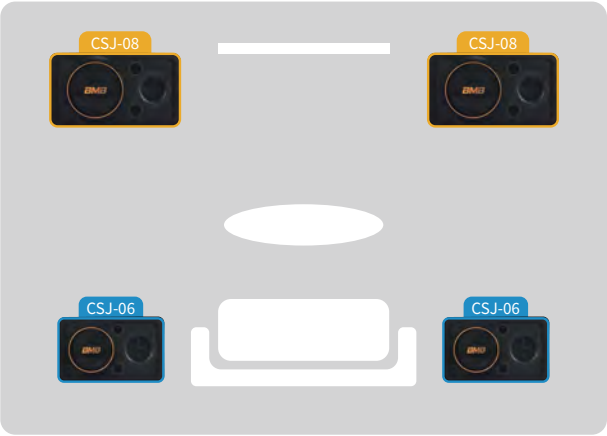
A: Karaoke Plan

Space size	20~30m ²		
Product unit	CSJ-12	Main SPK	1 pair
	DAR-350HD2	Amplifier	1 unit
	WH-210	Microphone	1 unit



B: Karaoke Plan

Space size	10~20m ²		
Product unit	CSJ-10	Main SPK	1 pair
	DAR-350HD2	Amplifier	1 unit
	WH-210	Microphone	1 unit



C: Multi-channel Karaoke Plan

Space size	15~20m ²		
Product unit	CSJ-08	Main SPK	1 pair
	CSJ-06	Fill sound SPK	1 pair
	DAR-350HD4	Amplifier	1 unit
	WH-210	Microphone	1 unit



D: Multi-channel Karaoke Plan

Space size	10~15m ²		
Product unit	CSJ-06 or CSJ-08	Main SPK	1 pair
	DAR-200HD	Amplifier	1 unit
	WH-210	Microphone	1 unit



E: Multi-channel Karaoke Plan

Space size	10~15m ²		
Product unit	CSJ-06	Main SPK	1 pair
	CSJ-06	Fill sound SPK	1 pair
	DAR-350HD4	Amplifier	1 unit
	WH-210	Microphone	1 unit

Matching recommendations

DAR-350HD4 / DAR-350HD2 / DAR-200HD
KARAOKE A/V AMPLIFIER



WH-210
WIRELESS MICROPHONE SYSTEM

